

**Task no.**

# Specification B600

Please complete this form and return it to your nearest GEMÜ office or to the address listed below!

**Operating pressure:** \_\_\_\_\_ bar

**Medium temperature:** \_\_\_\_\_ °C

**Material of tank valve body:**

- 1.4435
- 1.4435 BN 2 ( $\Delta Fe < 0,5\%$ )
- 1.4539
- Other \_\_\_\_\_

**Tests/Certificates:**

- AD 2000 W2 (Standard)
- Other \_\_\_\_\_

**Diaphragm material:**

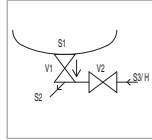
- EPDM Code \_\_\_\_\_
- PTFE Code \_\_\_\_\_
- Other \_\_\_\_\_

**Surface of tank valve body:**

- 1502 (Ra) ≤ 0,8 μm
- 1503 (Ra) ≤ 0,8 μm electropolished
- 1507 (Ra) ≤ 0,6 μm
- 1508 (Ra) ≤ 0,6 μm electropolished
- 1536 (Ra) ≤ 0,4 μm
- 1537 (Ra) ≤ 0,4 μm electropolished
- 1527 (Ra) ≤ 0,25 μm
- 1516 (Ra) ≤ 0,25 μm electropolished
- Other \_\_\_\_\_

**Quantity:** \_\_\_\_\_

**Example: B600 03-02.A**



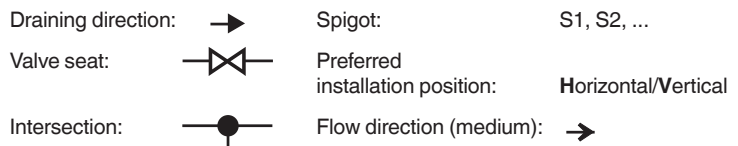
Please draw functional diagram.

**Important:** Please observe correspondence of table and functional diagram.

Please specify design (e.g. B600 03-02.A):

Tank radius R= \_\_\_\_\_ mm

Welding neck thickness SP = \_\_\_\_\_ mm  
(Standard 6 mm)



Spigot	Pipe connection				Operator			Other
Spigot no.	DN	Code	ød(a)[mm]	s[mm]	Operator type	Control function	Operator size	Comment/accessories
S1	Welding diameter dependent on type and diaphragm size							
S2					V1			
S3					V2			
S4					V3			
S5					V4			

The technical details of each enquiry must be checked by GEMÜ.

**Contact (GEMÜ):** \_\_\_\_\_

**Customer:** \_\_\_\_\_

Department: \_\_\_\_\_

Address: \_\_\_\_\_

Phone: \_\_\_\_\_ E-mail: \_\_\_\_\_

Please do not write here!

K-No.: \_\_\_\_\_

P600: \_\_\_\_\_

B600: \_\_\_\_\_

X: \_\_\_\_\_